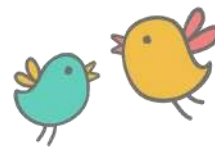


# FEE SCHEDULE

## 2021



Columba  
Cottage  
Early Learning Centre

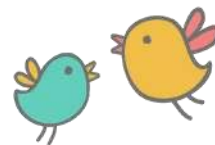
### LONG DAY CARE (LDC)

CHARGE	FEE
Enrolment Fee (upfront per child charge; non-refundable)	\$80.00
Bond (refundable per family charge)	\$250.00
Daily Session Fee (6.30am-6.00pm)	\$115.00

### ADDITIONAL CHARGES

REASON FOR EXTRA CHARGES	FEE
Late Pick Up Fee	\$30.00 per 15 minute block (per family)
Nappy Charge	\$2.00 per nappy (if insufficient supplied by parent)
Extracurricular Activities e.g. Sprockets	Dependent on activity, charged to your account
Incursions e.g. Healthy Harold, Bravehearts	Dependent on activity, charged to your account
Excursions e.g. Science Day, Billabong Zoo	Dependent on activity, charged to your account
Bank Dishonour Fee	\$15 per failed payment
Overdue Fee Charge	\$25 for every outstanding statement

# FEE SCHEDULE 2021



Columba  
Cottage  
Early Learning Centre

## OUTSIDE SCHOOL HOURS CARE (OSHC)

HOURS	PERMANENT BOOKING	CASUAL BOOKING	LATE PICK UP FEE (IF YOU ARRIVE AFTER 6.00PM)
Before School Care 6.30am to 9.00am	\$30.00	\$31.00	\$30.00 per 15 min block
After School Care 3.00pm to 6.00pm	\$35.00	\$36.00	\$30.00 per 15 min block
Vacation Care 6.30am to 6.00pm	\$81.00	\$91.00	\$30.00 per 15 min block
SCAS Short Sessions (SCAS students only)	\$12.00	\$12.00	After 4.30pm, reverts to a full session at a cost of \$36.00

## ADDITIONAL CHARGES

REASON FOR EXTRA CHARGES	FEE
Excursions e.g. Billabong Zoo, Putt Putt Golf, Water Fun Park	Varies in price (see current Vacation Care program for excursion costs)
Non-notification of Bus Pickup/Drop Off	\$10.00 per child as per OSHC Parent Handbook
Bank Dishonour Fee	\$15 per failed payment
Overdue Fee Charge	\$25 for every outstanding statement

Please note that additional fees may apply.